

enigma Colour Tone

Examples of Use

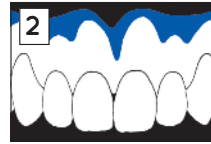
Drawings are schematic and do not represent actual layer thickness.
 Read full instructions before use.



Three colour on Enigma High-Base Pink veined.



(LP) Light Pink



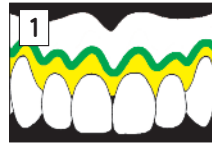
(DP) Dark Pink



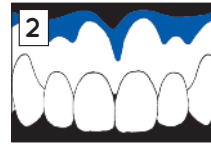
(NP) Natural Pink



Four colour on Enigma High-Base Pink veined.



(I) Ivory then
(LP) Light Pink



(DP) Dark Pink



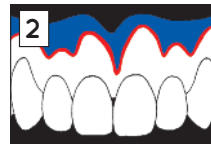
(NP) Natural Pink



Brownish pigmentation on Enigma High-Base Pink veined.



(LP) Light Pink



(DP) Dark Pink then
(LB) Light Brown



(NP) Natural Pink



Three colour on Enigma High-Base Translucent veined.



Four colour on Enigma High-Base Translucent veined.



Dark brownish pigmentation on Enigma High-Base Pink veined.